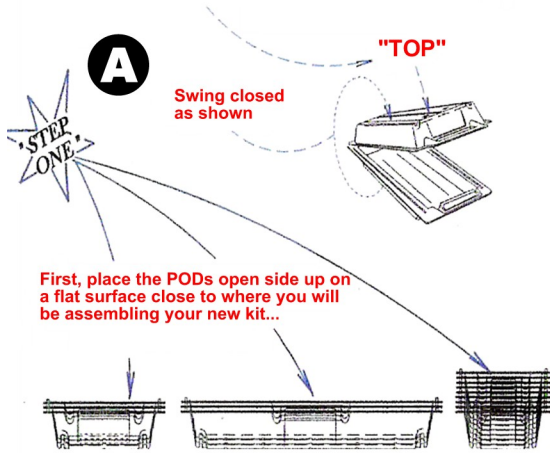


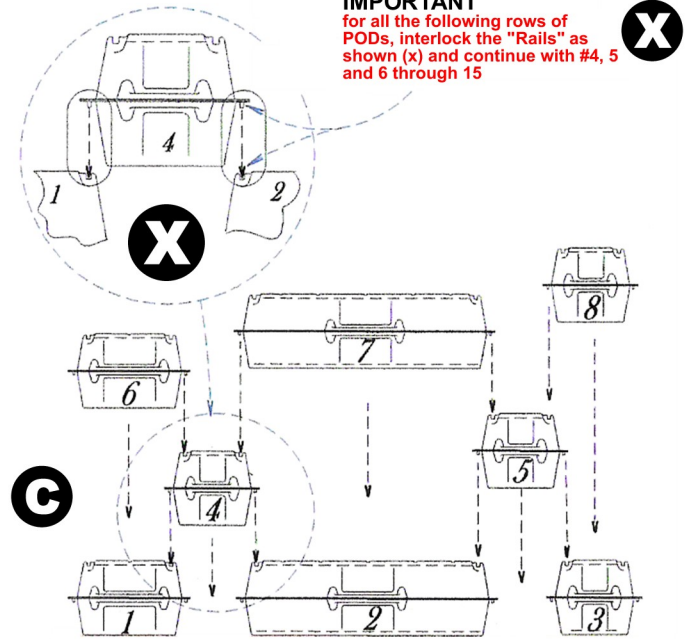
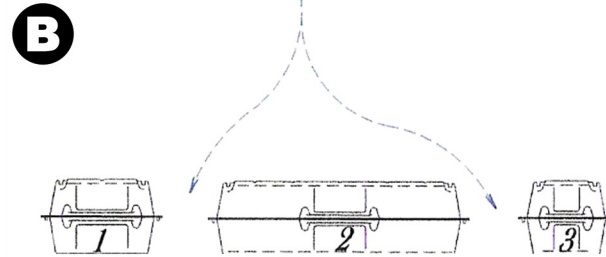
Universal Kit Assembly Instructions

Care MUST be taken to have the word "TOP" on the upper side of each POD as they are being placed in the arrangement



E (Starter) Kit shown. The same assembly procedure applies to all kits. Sizes are interchangeable, use the same size in columns.

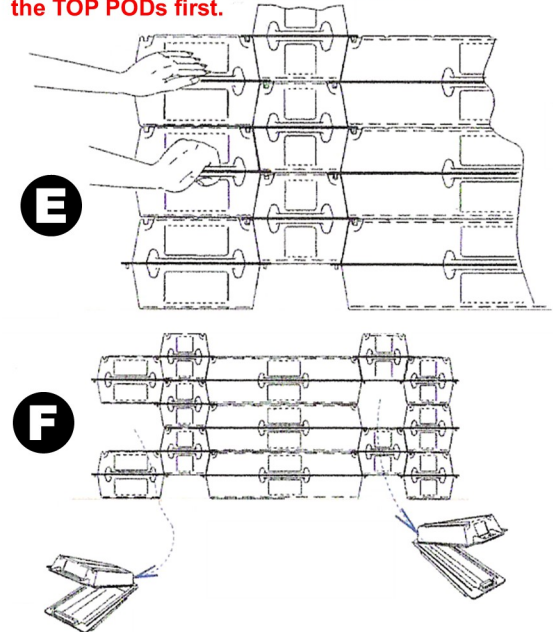
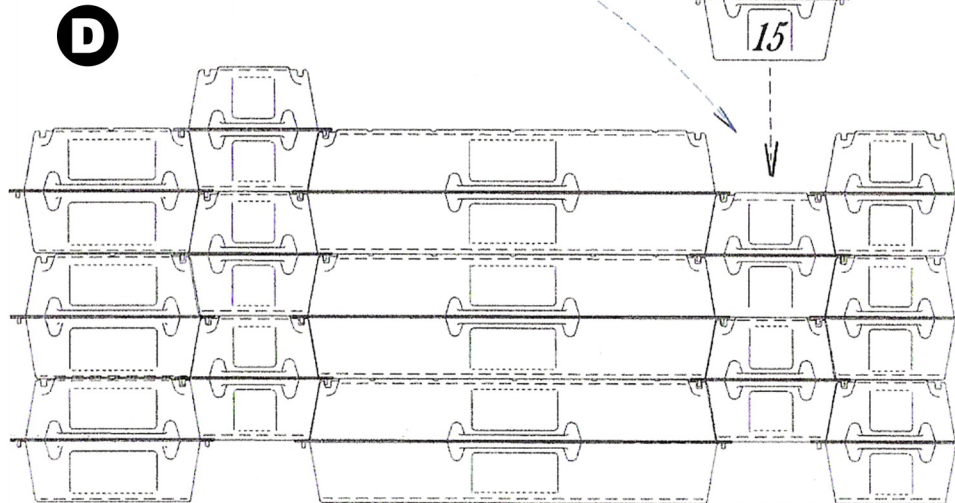
Next, begin the first row by placing your PODs as shown below. Be sure to leave a good hand's width of space between PODs.



IMPORTANT
for all the following rows of PODs, interlock the "Rails" as shown (x) and continue with #4, 5 and 6 through 15

NOTE
For best results when removing PODs, simply rest one hand above the container being removed and slide out the POD with your other hand smoothly (See E). When possible, assemble against a flat surface and fill the TOP PODs first.

Completed Arrangement



MADE IN U.S.A.

Care instructions:
Wash with cold or warm water and soap.

NOT INTENDED FOR CLIMBING UPON

Get NEAT PODS @

NeatContainers.com

Neat and Nifty TECH L.C
42174 Blossom Lane
Clinton Township, MI
48038

TEL: 877-632-8763
FAX: 586-286-4465

www.NeatContainers.com
877-NEAT-POD / 877-632-8763